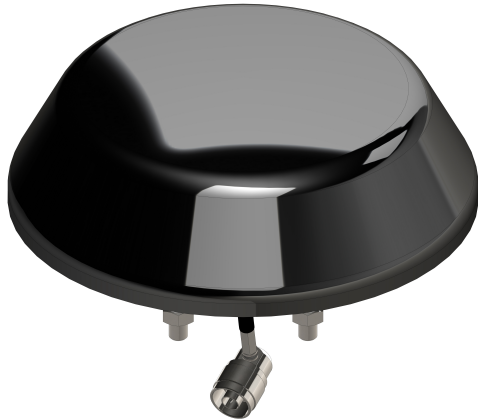


Antenna-Railway-2LG

Rooftop antenna with MIMO LTE/UMTS/
GSM/GSM-R and passive GNSS for railway



Features

- MIMO LTE/UMTS/GSM/GSM-R
- Passive GNSS
- EN 50155 certified

The Antenna-Railway-2LG is an omnidirectional multiband train antenna with certification according to railway standard EN 50155 for mounting on trains and vehicles. The antenna is designed for 2G, 3G, 4G and GSM-R networks and also GNSS. With protection level IPX9k and supported temperature range from -60 °C to +80 °C, the antenna can be used on top of vehicles for train to ground communications and much more.

The antenna combines multiple antennas in a single housing and thus supports MIMO LTE/UMTS/GSM/GSM-R and GNSS (GPS & GLONASS) with amplifier. Cellular is vertical and the passive GNSS is right hand circular polarized. The antenna can be mounted permanently with six bolts and 3 included 3m cables allow a flexible positioning.

Frequencies

- 694 - 960 MHz
- 1710 - 2690 MHz
- 1560 - 1606 MHz

Specifications

Supported Technologies	GSM UMTS MIMO LTE GSM-R Passive GNSS (GPS & GLONASS)
Cellular	Frequencies: 694 - 960 / 1710 - 2690 MHz Gain: 7,1 dBi (LTE 700) / 5,6 dBi (GSM 900) / 7,8 dBi (UMTS) VSWR: $\leq 1,8$ Impedance: 50 Ohm Radiation: Omnidirectional; vertical polarization Connectors: 2x TNC male Cables: 2x FRNC 3m
GNSS	Frequencies: 1575 / 1602 MHz Type: Passive Gain: 5.1 dBi VSWR: $\leq 1,8$ Impedance: 50 Ohm Radiation: Omnidirectional; right-hand circular polarization Connector: N (m) Cable: RG 223 FRNC; 0.3m
GNSS Amplifier	Frequencies: 1560 - 1606 MHz Power: 2.5 - 5 V Gain: 25 dB Impedance: 50 Ohm Connector: TNC male Cable: FRNC 3m
Certifications	EN 50155, EN 50122, EN 50124, IEC 60068, IEC 61373, ISO 20653, ISO 9227, EN 45545-2, DIN 5510-2, NF F 16-102 2014/30/EU; 2006/28/EC; 2002/95/EC
Protection level	Plastic case UV-resistance, waterproof IPX9k
Temperature range	-60°C to +80°C
Environment	Outdoor
Color	Black or customized (all RAL types)
Dimensions	D: 200 mm H: 60 mm
Mounting	6 bolts on pitch circle 110 mm M8 x 40 mm 60° Torque: 12 Nm
Order number	Antenna-Railway-2LG